

# A Collaborative Approach to Address the Concerns of a County's Community Health

Sharon Abraham, Julia Lyons, BSN, RN  
Lawrence University

## Background

- Sawyer County is located in the Northwest region of Wisconsin. By the 2020 consensus, there was a population of 18,074 people. It is the fifth largest county (by land area) in Wisconsin.
- Sawyer County Public Health introduced a Community Health Improvement Plan (CHIP) to the community showing what areas of the community needed improvement.
- Due to the CHIP plan, Sawyer County created a Healthier Together initiative to work on improving these areas that the community members and the public health officials determined needed the most improvement.
- This initiative included the creation of a new Healthier Together website, social media awareness of certain health topics, and a Healthier Together Convening Committee that was created to further generate ideas and to connect with others.

## Health Rankings

- The health rankings was a part of the Healthier Together website
- Each county in Wisconsin was ranked from 1 (being the healthiest county) to 72 (being the least healthiest).
- The counties were ranked based on factors like health outcomes, health factors, quality of life, length of life, health behaviors, clinical care, social and economic factors, and physical environment.
- On the right, Chart 1 shows the rankings for each of the factors from the past 5 years (2018-2022).
- In Table 1, it shows the specific rankings of the county based on all of the factors previously mentioned.
- There were some factors that Sawyer did well on, but there are others that needed improvement, which the Health Department did focus on.

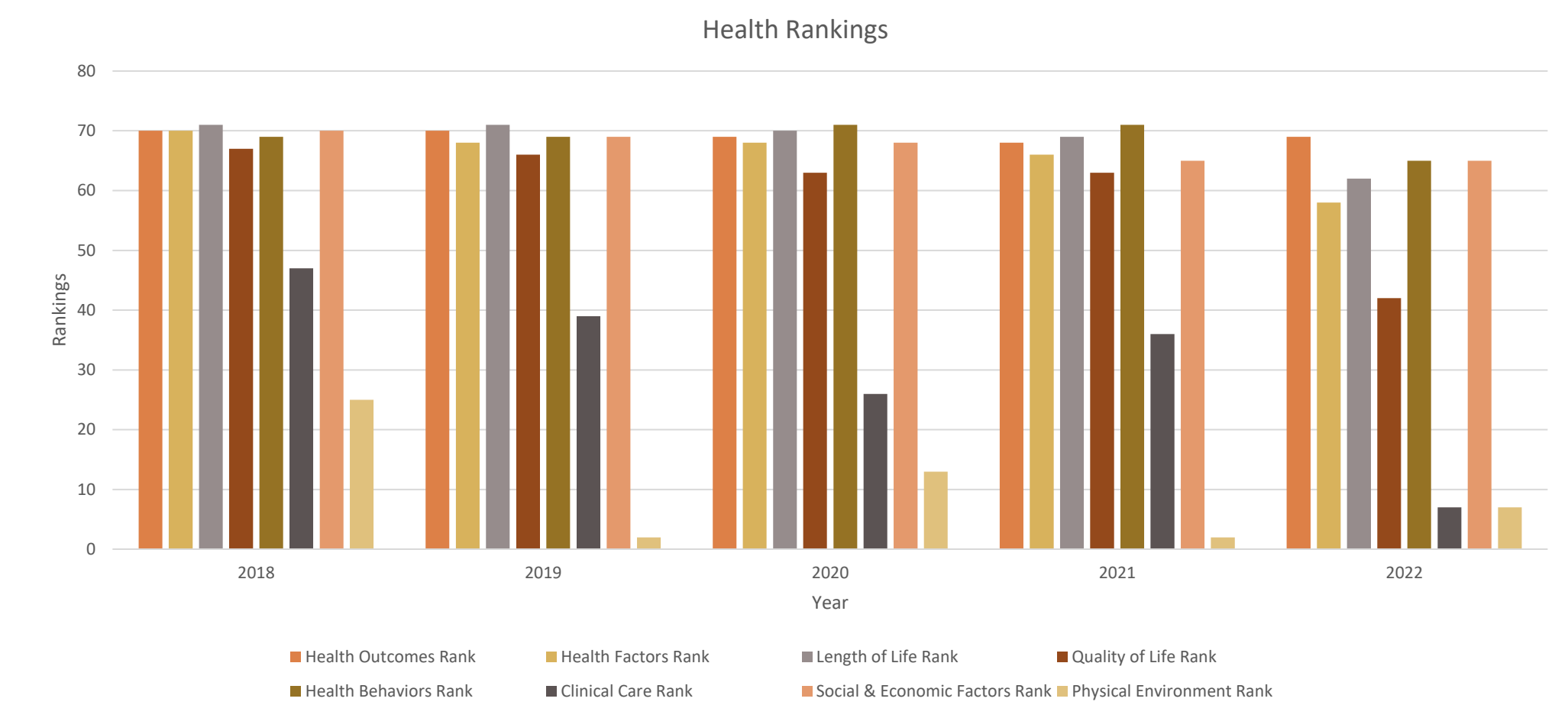


Chart 1. Sawyer County health rankings from the past five years

## Introduction to CHIP

The Community Health Improvement Plan (CHIP)

- Created by the partnership of Wisconsin hospitals and health departments to identify, prioritize, and address the health needs within a community.
- In each quarter, a CHIP progress report was developed and shared with the Hayward Area Memorial Hospital Board of Directors to make sure that each priority were improved upon.

To identify and develop a plan for the health of the community, an assessment of the community health needed to be completed in 4 phases:

- Review the 2020-2022 Community Health Improvement Plan
- Complete a Community Health Needs Assessment using a Community Survey
- Identify the Priorities
- Create a Priority Action Plan

The community survey was completed based on the goals of Wisconsin's Healthiest Wisconsin 2020 plan

## Health Rankings Cont.

- The rankings in Table 1 are further broken down in Figure 2. Each factor can be broken down further like tobacco use, diet & exercise, alcohol and drug use, sexual activity, education, employment, etc.
- The rankings that were consistent in the survey that was sent out during the creation of the CHIP plan
  - For example, the community wanted more improvement on the health behaviors, which consisted of wanting more resources for diet and exercise, and sexual activity
- The Sawyer County Public Health Department then focused on these factors and created a Priority Action Plan.

## Priority Action Plan

The Priority Action Plan consists of the following

- Mental Health Resources and Informed Care for children through young adult, adults, and seniors
- Chronic Disease Management for adults and seniors
- ACES, Health Education, Health Career Exploration for children through young adults
- Dementia Care for seniors
- Alcohol and Drug Recovery Groups and Culturally Sensitive Healthcare for adults
- There are other factors that are in the Priority Action Plan that is beyond the scope of the Sawyer County Health Department and the Hayward Area Memorial Hospital
  - Like housing for seniors



Figure 1. Front cover of the Sawyer County CHIP plan.

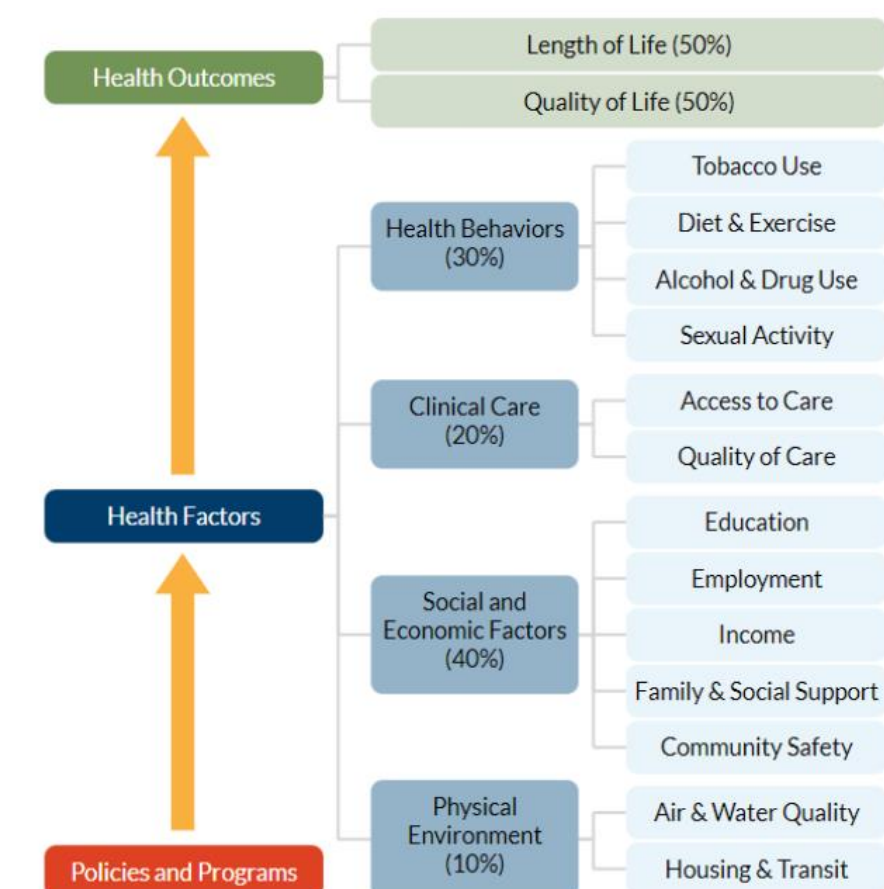


Figure 2. Health factors used for county rankings.

Years	Health Outcome	Health Factors	Length of Life	Quality of Life	Health Behaviors	Clinical Care	Social and Economic	Physical Environment
2018	70	70	71	69	69	47	70	25
2019	70	68	71	69	69	39	69	2
2020	69	68	70	71	71	26	68	13
2021	68	66	69	71	71	36	65	2
2022	69	58	62	42	65	7	65	7

Table 1. Health rankings of Sawyer County from 2018 to 2022.

## Conclusions

- The Healthier Together website has access to the CHIP plan as well as the rankings, the explanations of the rankings, and the Priority Action Plan.
- In addition to this, the website has resources to different topics like healthier eating, healthier living, mental health, etc. These resources would help the community members who are interested in these topics, and will use them in the future.

## Contact

Sharon Abraham  
Lawrence University  
Email: sharon.t.abraham@lawrence.edu

## Acknowledgments

I would like to acknowledge the Sawyer County Public Health Department and Julia Lyons, my mentor and the Public Health Officer at Sawyer County.